

ULTRA SONIC AROMA DIFFUSER BUTTERFLY DREAM



User Manual

Product Description

The aroma diffuser combines elements of traditional oriental culture with the latest knowledge and technologies of modern science. Using ultrasonic technology, it breaks down water and essential oils into a fine mist of micro-particles, which is released into the air along with active ingredients and anions. This technology does not heat essential oils, and therefore preserves their full therapeutic effects. The diffuser naturally scents and humidifies the environment, promotes relaxation, quality sleep, concentration, and overall well-being, while also helping to neutralise undesirable odours indoors. This product is made from

recyclable, food-grade plastic.

Specifications

Product: aromatherapy diffuser

Dimensions: \varnothing 140 mm \times 215 mm

Material: ceramic, plastic

Weight: 745 g

Input: 100–240 V

Output : DC 24 V

Power: 12 W

Frequency: 50 Hz

Vibration frequency: 1.7 MHz

Noise: 20 ~ 40 dB

Range: up to 40 m²

Water volume: max. 200 ml

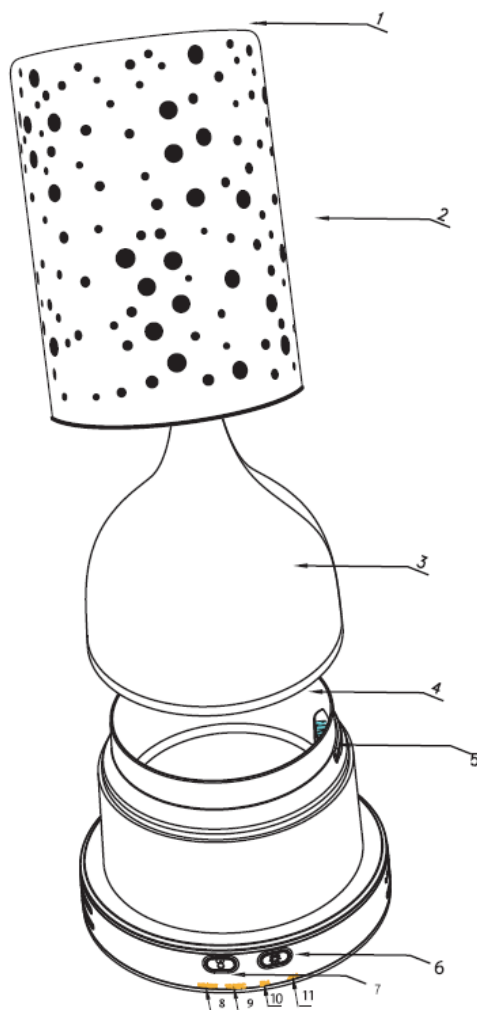
LED light: 7 colours alternating, specific colour selection, option to turn off lighting

Material: ceramic, plastic

Colour: white/bamboo imitation

Operation time: up to 4 h

Accessories: AC adapter, manual



1. Mist outlet
2. Cover A
3. Cover B
4. Water tank
5. Air outlet
6. Light button
7. Mist button
8. LED indicator – continuous/medium mist
9. LED indicator – intermittent mist
10. LED indicator – 2-hour mist
11. LED indicator – 4-hour mist



Warning

Before using this appliance, please read the following safety instructions carefully. The safety

precautions below are intended to prevent injury to yourself and others or damage to the product.



Safety instructions

DANGER OF ELECTRIC SHOCK

- Only plug the appliance into a mains socket installed in accordance with regulations, with a voltage corresponding to the rated voltage indicated on the type plate.
- The appliance must not be immersed in liquid under any circumstances.
- Do not expose the appliance to moisture or use it outdoors. If liquid does get into the appliance, immediately unplug the appliance from the mains socket and have the appliance repaired by qualified specialist personnel.
- In the event of operational malfunctions and before cleaning the appliance, unplug it from the mains socket.
- When unplugging from the socket, do not pull the cable.
- Do not wrap the mains connection cable around the appliance and protect it from damage.
- If the power cable of this appliance is damaged, it must be replaced by the manufacturer, its customer service, or a professionally qualified person to prevent hazards.
- Do not bend or compress the mains connection cable and lay it in such a way that no one can step on it or trip over it.
- Never touch the appliance, mains cable, or plug with wet hands.
- Immediately after use, disconnect the appliance from the mains supply. Only when the mains plug is pulled out of the mains socket is the appliance completely disconnected from the power.
- You must not repair the casing of the appliance. In such a case, safety is not guaranteed and the warranty becomes void. Have a faulty appliance repaired only by authorised specialist personnel.
- Ensure that the mains cable is not wet or damp during operation.



Never use the appliance near water, especially not near washbasins, bathtubs, and similar containers. Proximity to water poses a danger, even when the appliance is switched off.



WARNING! If this safety instruction is not followed, an accident will occur. This may result in minor or serious injury.

The manufacturer is not liable for damages caused by improper use of the product.

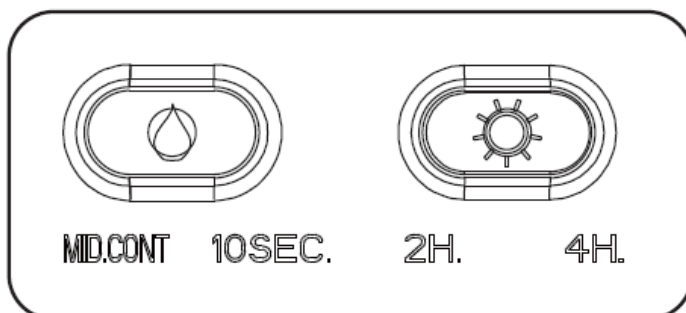
- This appliance is not intended for use by persons (including children) with reduced physical, sensory or mental capabilities, or lack of experience and knowledge, unless they are under constant supervision or have been instructed on the use of the appliance by a person responsible for their safety.
- Use in an environment with a temperature between 10 °C and 30 °C
- The device may only be used with the supplied power supply.
- Do not disassemble, modify, or heat the appliance. Do not cut, damage, modify, or strain the power cable. This could result in electric shock or fire.

- Only use **clean cold water** (bottled or tap).
- Never **exceed the maximum water level** . Always pour in water before adding essential oils. Use a measuring cup or another container to refill – do not fill the tank directly from the tap.
- Only put **water with essential oil** into the tank. Any other liquids may permanently damage the device or be harmful if inhaled.
- If the appliance smokes, emits a strange odour, or any unusual situation occurs, stop using it immediately.
- Do not touch any part of the appliance with wet hands.
- Do not let the mist spray directly onto furniture, clothing, or walls.
- Essential oil can cause staining. **We recommend using only BEWIT essential oils.** In case of accidental spillage, use a clean cloth. **Internal use of essential oil is forbidden!**
- Unplug the appliance when not in use.
- Do not cover the appliance with anything during operation.

Instructions for Use

Button

MID/CONT (medium/continuous mist) 10 s / 2 h / 4 h



Reminder:

When you press the MIST/TIME button and activate the heavy mist mode, you can hold the MIST/TIME button for 10 seconds. The MID/CONT indicator light will illuminate, and the device will switch to fine mist mode.

Mist Control

Repeatedly pressing the MIST button changes the intensity and spray modes:

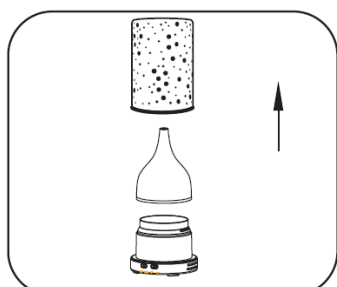
Continuous Mist → Intermittent Mist (10s on / 10s off) → 2-hour Timer → 4-hour Timer → Mist Off

LED Light Control

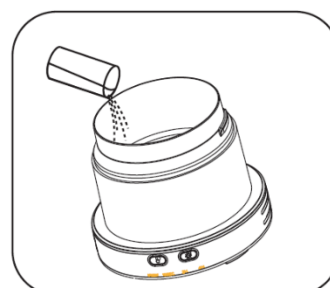
Repeatedly pressing the LIGHT button changes the LED light intensity in the following order:

100% → 50% → original effect → constant intensity → off

1. Remove the cover

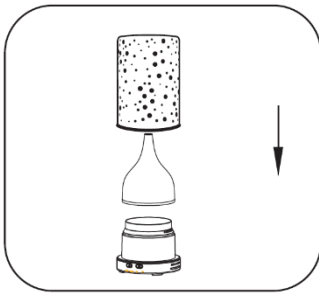


2. Fill the tank with water

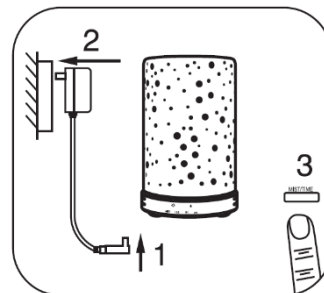


Warning: Always unplug the device when filling it.

3. Replace the cover.



4. Connect the power supply.

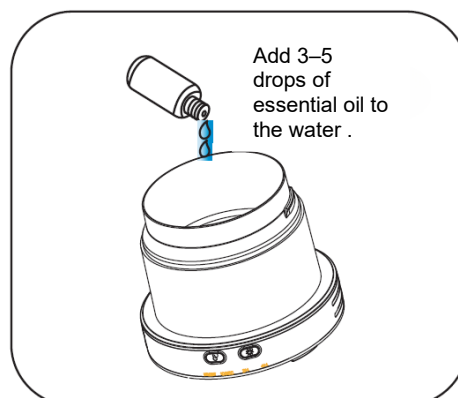


Do not move or tilt the diffuser while operating.



Adding essential oils

1. Press OFF and remove the cover.
2. Add your favourite essential oil to the tank.
3. Replace the cover, connect the power. The room will fill with fragrance.



Warning

Microorganisms that may be present in the water or in the environment where the device is used or stored can multiply in the tank and subsequently be dispersed into the air. If the

water is not changed regularly and the tank is not properly cleaned every 3 days, this can pose a serious health risk.

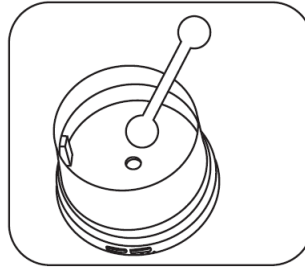
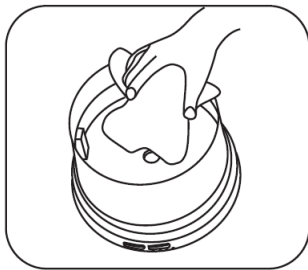
Empty the tank and refill it with fresh water every three days.

Before refilling, clean it with fresh tap water.

Remove any limescale, deposits or film that may have formed on the walls of the tank or in its interior. Thoroughly dry all surfaces.

Maintenance

1. Press the OFF button and disconnect the device from the power supply.
2. Remove the cover.
3. Pour out the water.
4. Clean the device



Warning: Do not pour water out through the air outlet.

Caution: Always unplug the device before cleaning.

1. Use a cotton bud to clean the atomising unit.
2. Use a soft cloth to clean the external parts of the device.
3. We recommend cleaning the device every 3 days.

Be aware that high humidity can encourage the growth of microorganisms in the surrounding environment.

Do not leave water in the tank if the device is not currently in use.

Always empty and clean the device before storing it. Before further **use, clean the humidifier again.**



Disposal after the end of the service life of the appliance

This product must not be disposed of as ordinary household waste. At the end of life hand it over to a collection point or a designated place for recycling electrical and electronic equipment, in accordance with applicable legal regulations. Proper disposal helps protect the environment and human health.

Product packaging (paper, plastic) dispose of in accordance with local regulations for waste sorting.

Solution problems

Problem	Possible cause	Solution
Diffuser does not switch on	Not connected to power / faulty adaptor	Check the connection of the adaptor, or try a different socket
No mist	Lack of water / maximum exceeded level / cover is not properly fitted	Top up the water, fit the cover correctly
Weak mist	Contaminated ultrasonic plate / hard water	Clean the plate with a soft cloth, use clean water
The device is making an unusual noise	Lack of water / uneven surface	Top up the water, place on a flat surface
The light is not on	The LED is switched off	Press the button LIGHT
Unpleasant odour	The tank is not cleaned	Clean the tank with a soft cloth
Water is leaking from the tank	The cover is not properly fitted / the appliance is tilted	Fit the cover correctly, place on a level surface

Warranty

This product was strictly tested before leaving the manufacturer. During the statutory warranty period from the date of purchase, the customer may request a free repair or replacement due to faults arising from normal use. If necessary, please contact the product seller.

The warranty does not cover faults arising from accidents, improper use or maintenance.



BEWIT Natural Medicine,
s.r.o. Michalská 2030,
710 00 Ostrava
Tel.: (+420 552 305 105
Email: info@bewit.love

**EU Declaration of Conformity**

according to Act No. 22/1997 Coll., as amended by Act No. 71/2000 Coll., Act No. 102/2001 Coll., Act No. 205/2002 Coll., Act No. 226/2003 Coll. and Act No. 277/2003 Coll.

Manufacturer:

BEWIT Natural Medicine, s.r.o.
Michalská 2030
710 00 Ostrava
Company ID: 29443237

Person authorized to compile technical documentation:

BEWIT Natural Medicine, s.r.o.
Michalská 2030
710 00 Ostrava
Company ID: 29443237

We hereby declare, under our sole responsibility, that the equipment specified below complies with the essential requirements of:

Act No. 22/1997 Coll. on Technical Requirements for Products,
Government Regulation No. 176/2008 Coll. on Technical Requirements for Machinery,
Government Regulation No. 90/2016 Coll. on the Assessment of Conformity of Specified Products when Placed on the Market,
Government Regulation No. 118/2016 Coll. laying down technical requirements in accordance with Directive 2014/35/EU (LVD – Low Voltage Directive),
Government Regulation No. 117/2016 Coll. laying down technical requirements in accordance with Directive 2014/30/EU (EMC – Electromagnetic Compatibility Directive),
Act No. 634/1992 Coll. on Consumer Protection,
Government Regulation No. 387/2002 Coll. on General Product Safety,
Government Regulation No. 258/2000 Coll. on Public Health Protection,
Vyhláška No. 38/2001 Coll. of the Ministry of Health on hygienic requirements for products intended to come into contact with foodstuffs,
and other related regulations and standards that apply to the product.

Electrical equipment:

Name	Aroma diffuser
Type/Model	Butterfly dream
Year of manufacture	2026

Description and purpose of the electrical equipment:

Ultrasonic aroma diffuser.



BEWIT Natural Medicine, s.r.o.
Michalská 2030, Ostrava
IČO: 29443237
www.bewit.cz

List of applied technical regulations and standards:

EN IEC 55014-1, EN IEC 55014-1:2021, EN IEC 55014-2:2021, IEC 62321-3-1:2013,
IEC 62321-4:2013+Amd01:2017, IEC 62321-5:2013, IEC 62321-6:2015,
IEC 62321-7-1:2015 & IEC 62321-7-2:2017, IEC 62321-8:2017

Chosen conformity assessment procedure:

Assessment of conformity under the conditions specified by importer: Act No. 22/1997 Coll.,
as amended, § 12, paragraph 3, letter a).

The electrical equipment complies with all relevant provisions of the following legal
regulations of the European Community:

Directive 2006/42/EC of the European Parliament and of the Council on machinery
(Government Regulation No. 176/2008 Coll.).

In Ostrava, date

8/11/2025

First name and surname, position in the company:

Jiri Cernota, founder and managing director

Signature:



NATURAL
MEDICINE

BEWIT Natural Medicine, s.r.o.

Mlátecká 2020, 710 01 Ostrava

Česká Republika

IC: 23444227, DIČ: CZ23444227

☎ +420 512 730 559

✉ info@bewit.cz

🌐 www.bewit.cz