

BEWIT FRANCHISE, s.r.o.  
Michalská 2030,  
Slezská Ostrava,  
710 00 Ostrava  
IČO: 29443237  
BEWIT.LOVE, SHARE.LOVE



# GC ANALYSIS REPORT

## DESCRIPTION / POPIS

NAME / NÁZEV	INCI NAME	CAS-No
Palmarosa	<i>Cymbopogon Martini Oil</i>	8014-19-5

## SPECIFICATION / SPECIFIKACE

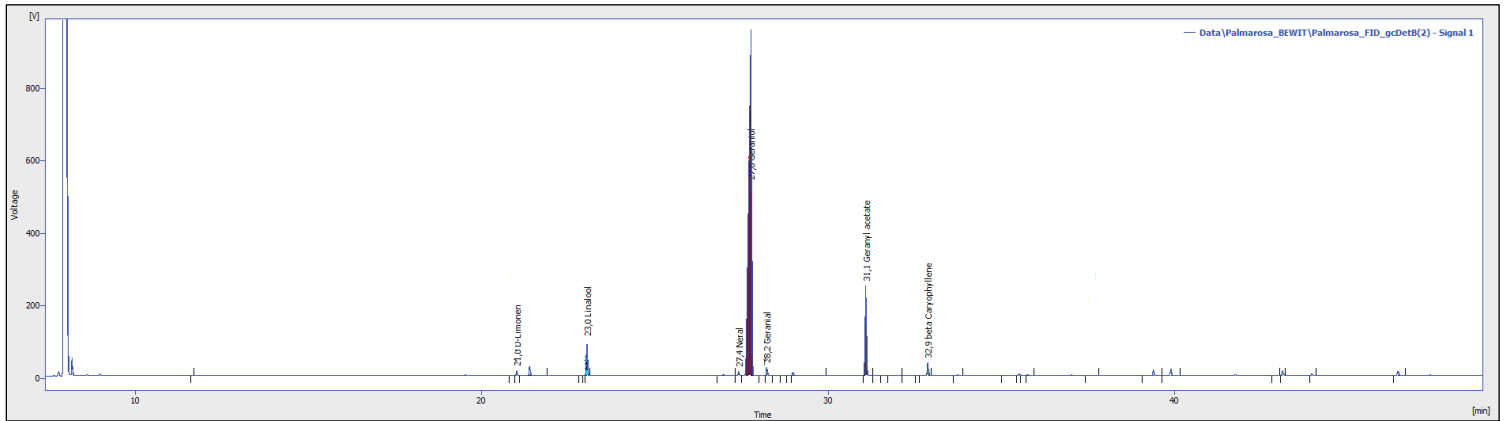
ORIGIN / PŮVOD	COLOUR / BARVA	ODOUR / VŮNĚ, ZÁPACH
India	Clear	Characteristic

APPEARANCE / VZHLED	SOURCE / ZDROJ	PRODUCTION / VÝROBA
Clear liquid	Leaves	Steam distilled

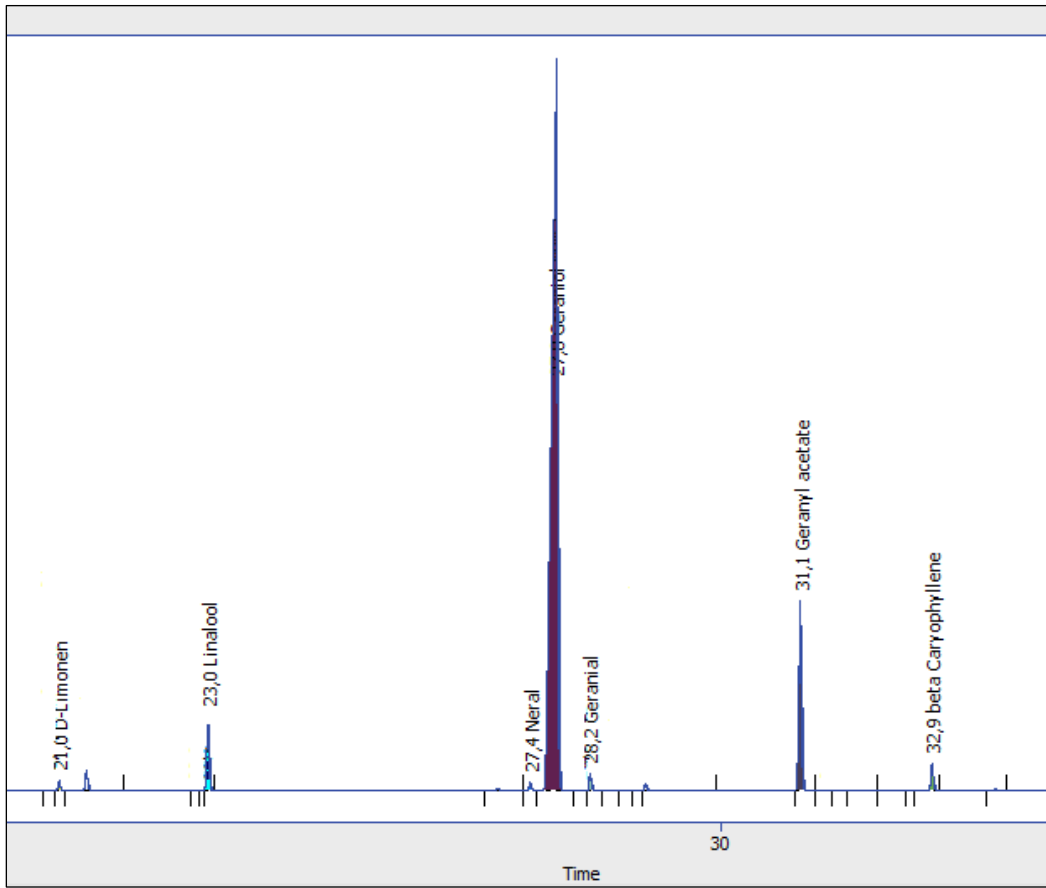
## COMPONENTS / SLOŽKY

COMPOUND / SLOUČENINA	RELATIVE CONTENT / OBSAH [%]	RETENTION TIME / RETENČNÍ ČAS
Geraniol	79,4	27,78
Geranyl acetate	9,1	31,09
Linalool	3,3	23,05
$\beta$ -Caryophyllene	1,3	32,87
Geranial	0,8	28,23
D-Limonen	0,5	21,02
Neral	0,4	27,42

Picture 1. – Palmarosa chromatogram (solvent used in the analysis, major and minor representation of peaks)

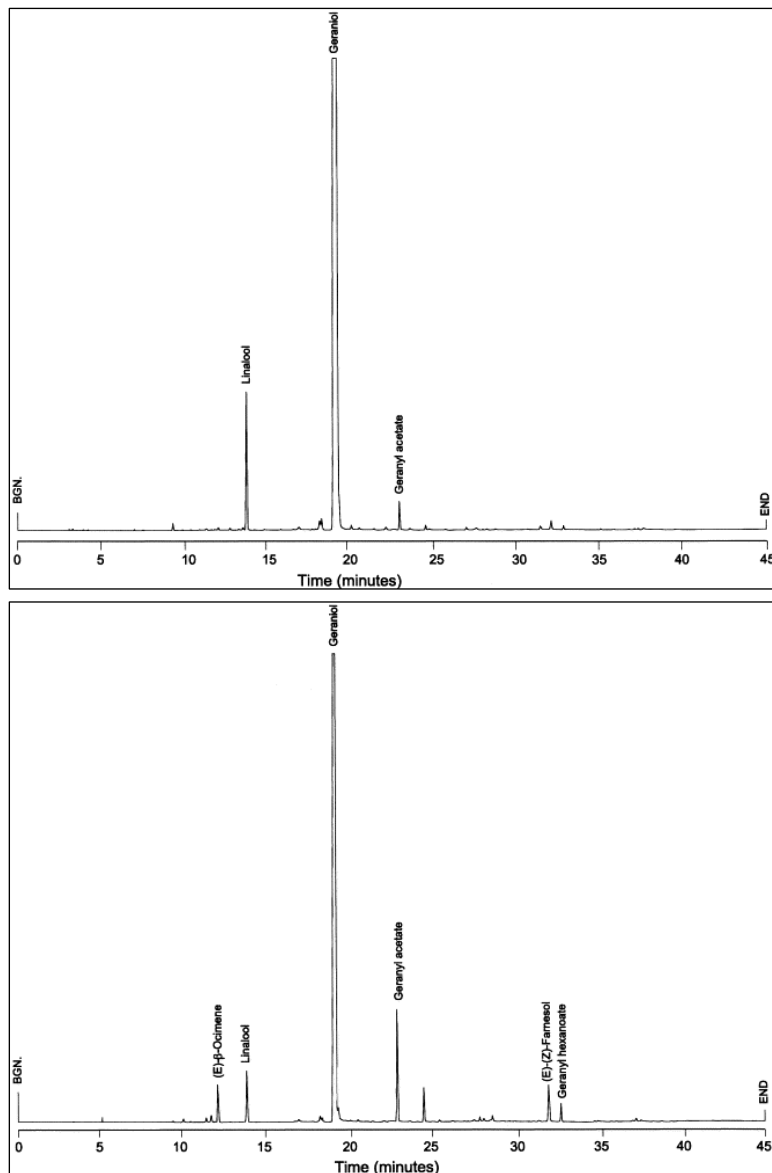


Picture 2. – Palmarosa chromatogram (major and minor representation of peaks without solvent)



- Comparison, scientific studies

Picture 3. – Chemical composition of essential oil of *Cymbopogon Martini* Oil [1]



[1] RAO, B.R.Rajeswara, P.N. KAUL, K.V. SYAMASUNDAR a S. RAMESH. Chemical profiles of primary and secondary essential oils of palmarosa (*Cymbopogon martinii* (Roxb.) Wats var. *motia* Burk.). *Industrial Crops and Products* [online]. 2005, **21**(1), 121-127 [cit. 2020-04-15]. DOI: 10.1016/j.indcrop.2004.02.002. ISSN 09266690. Dostupné z: <https://linkinghub.elsevier.com/retrieve/pii/S0926669004000317>.

Picture 4. – Laboratory analysis report of essential oil of *Cymbopogon Martini* Oil [1]

Page 1 of 1			
Software Version	: 6.3.2.0646		
Sample Name	: Palmarosa 118VA601		
Instrument Name	: CLARUS 500		
Rack/Vial	: 0/3	Operator	: Charlene
Sample Amount	: 1.000000	Dilution Factor	: 1.000000
Cycle	: 3		
Result File	:		
Sequence File	:		
<b>Rapport d'analyse</b>			
colonne apolaire			
Pic #	Component Name	TR [min]	Area [%]
1	myrcene	11.98	0.20
2	limonene	13.56	0.12
3	ocimene <(Z)-beta>	13.91	0.41
4	ocimene <(E)-beta>	14.39	1.43
5	linalool	16.46	2.48
6	nerol	22.12	0.13
7	neral	22.29	0.14
8	geraniol	23.49	81.52
9	geranial?	23.62	1.36
10		24.68	0.06
11	geranyl formate	25.30	0.08
12	geranyl acetate	28.70	7.39
13	elemene <beta>	29.57	0.08
14	caryophyllene <(E)>	30.68	1.92
15	humulene <alpha>	31.98	0.12
16		33.14	0.06
17		33.54	0.06
18	geranyl butanoate	35.74	0.19
19	nerolidol <(E)>	36.01	0.17
20	caryophyllene oxide	36.57	0.18
21		37.61	0.04
22	farnesol <(2E,6E)>	41.64	0.86
23	geranyl caproate	42.75	0.72
24	farnesyl acetate <(2E,6E)>	45.65	0.10
25		49.22	0.17
			100.00