

BEWIT FRANCHISE, s.r.o.
Michalská 2030,
Slezská Ostrava,
710 00 Ostrava
IČO: 29443237
BEWIT.LOVE, SHARE.LOVE



GC ANALYSIS REPORT

DESCRIPTION / POPIS

NAME / NÁZEV	INCI NAME	CAS-No
Lemon	<i>Citrus Limonum Oil</i>	8008-56-8

SPECIFICATION / SPECIFIKACE

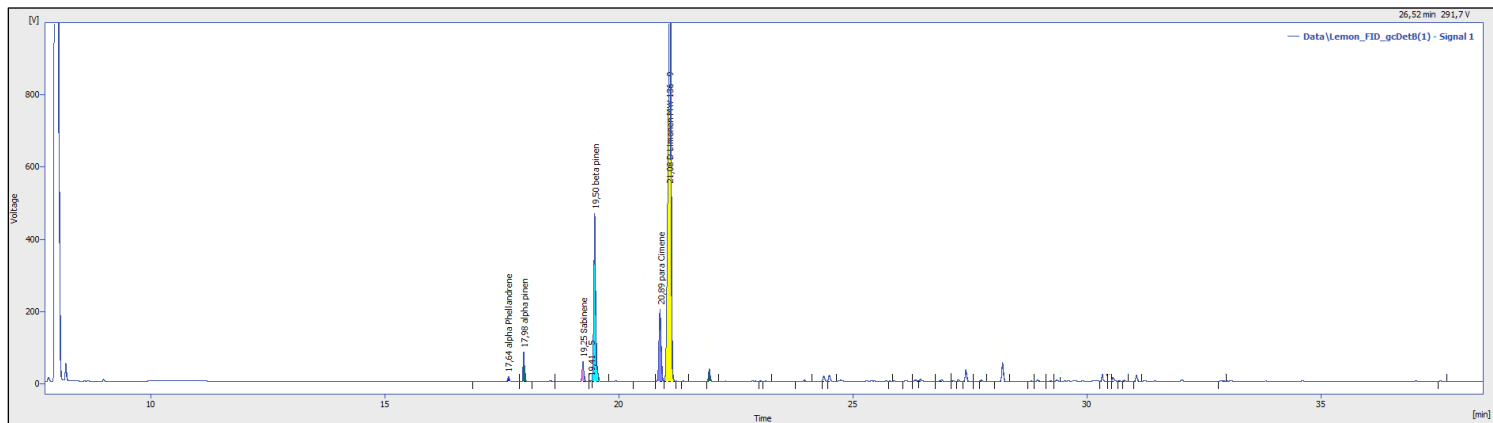
ORIGIN / PŮVOD	COLOUR / BARVA	ODOUR / VŮNĚ, ZÁPACH
India	Clear	Characteristic

APPEARANCE / VZHLED	SOURCE / ZDROJ	PRODUCTION / VÝROBA
Clear liquid	Fruit peels	Steam distilled

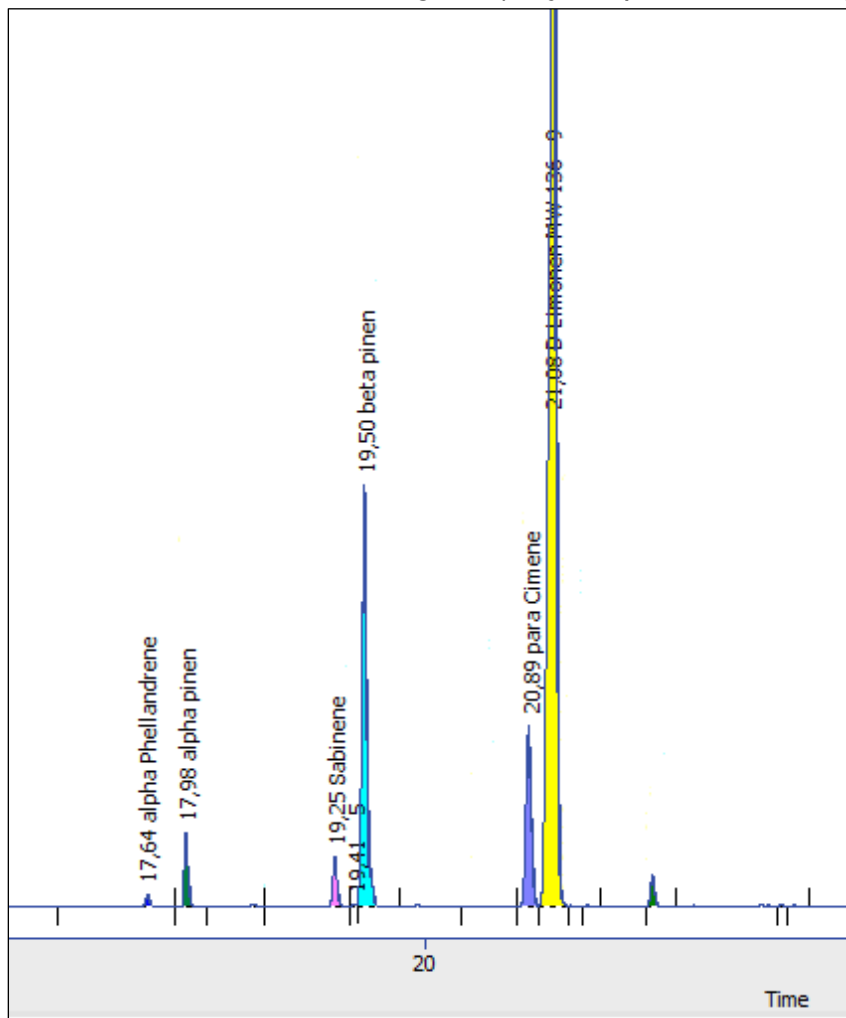
COMPONENTS / SLOŽKY

COMPOUND / SLOUČENINA	RELATIVE CONTENT / OBSAH [%]	RETENTION TIME / RETENČNÍ ČAS
D-Limonen	63,2	21,08
β-Pinen	16,3	19,50
p-Cymene	8,1	20,89
α-Pinen	2,4	17,98
Sabinene	1,8	19,25
γ-Terpinene	1,0	21,94
α-Phellandrene	0,4	17,65
Estragole	0,2	26,34

Picture 1. – Lemon chromatogram (solvent used in the analysis, major representation of peaks)



Picture 2. – Lemon chromatogram (major representation of peaks without solvent)



- **Comparison, scientific studies**

Picture 3. – Chemical composition of essential oil of *Citrus limonum* [1]

Lemon (distilled)	
Botanical name: <i>Citrus x limon</i> L.	
Botanical synonym: <i>Citrus limonum</i> Risso	
Family: Rutaceae	
Essential oil	
Source: Fruit peel, by distillation	
Key constituents:	
(+)-Limonene	64.0–70.5%
β-Pinene	8.2–14.0%
γ-Terpinene	8.4–10.7%
Geranial	0.7–2.2%
α-Pinene	1.1–2.1%
Sabinene	0.8–1.7%
β-Myrcene + methyl heptenone	1.4–1.6%
Neral	0.5–1.5%

(Lawrence 1993 p. 62)

[1] TISSERAND, Robert a Rodney YOUNG. *Essential oil safety: a guide for health care professionals*. Second edition. Edinburgh: Elsevier, 2013. ISBN 9780443062414.